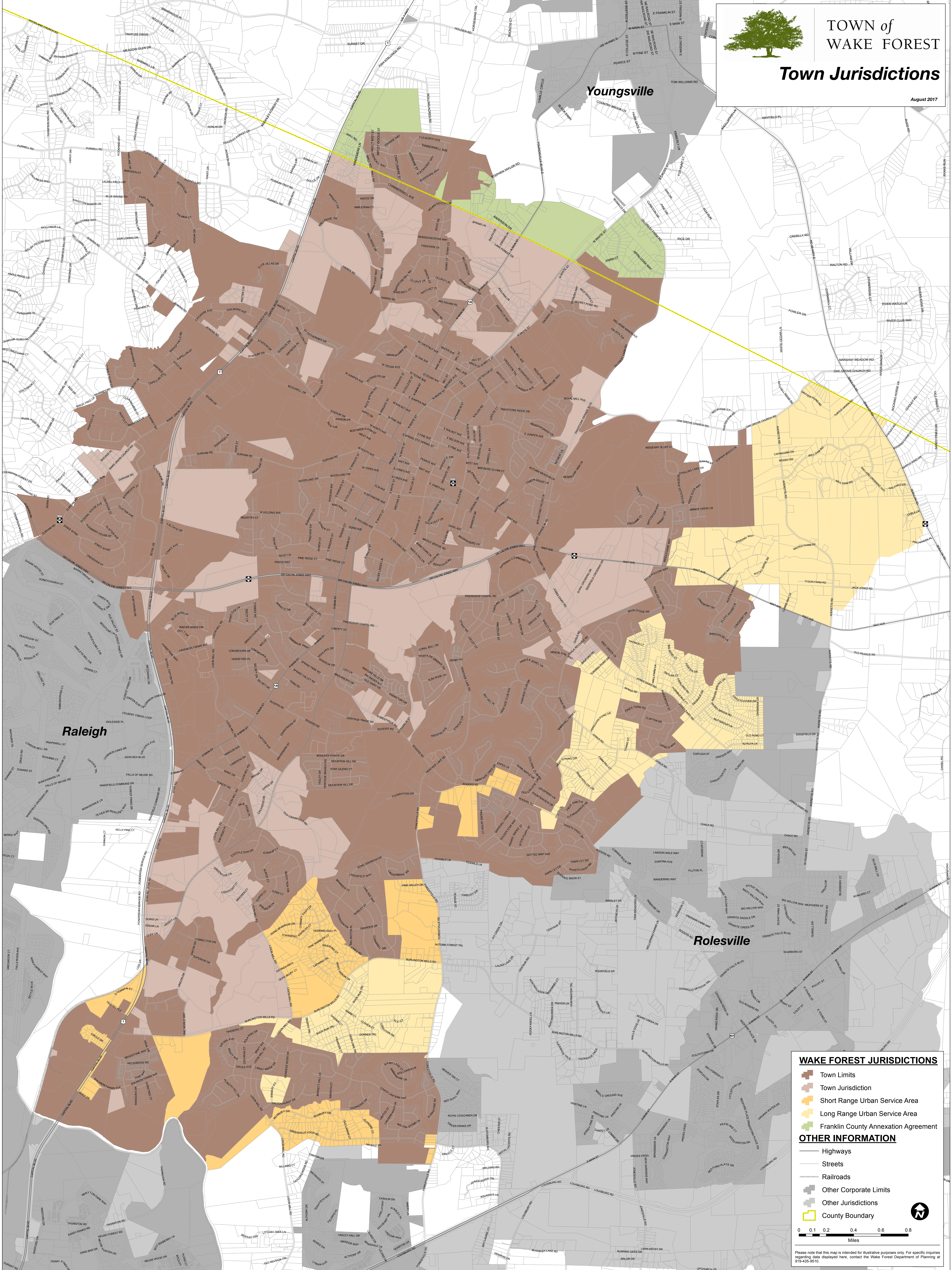




Town Jurisdictions

August 2017



WAKE FOREST JURISDICTIONS

- Town Limits
- Town Jurisdiction
- Short Range Urban Service Area
- Long Range Urban Service Area
- Frank County Annexation Agreement

OTHER INFORMATION

- Highways
- Streets
- Railroads
- Other Corporate Limits
- Other Jurisdictions
- County Boundary

0 0.1 0.2 0.4 0.6 0.8
Miles

Please note that this map is intended for illustrative purposes only. For specific inquiries regarding data displayed here, contact the Wake Forest Department of Planning at 919-435-9510.