

Town of Wake Forest
Joyner Park Community
Center



CLARKNEXSEN



Welcome, Project Background, Introductions

Ruben Wall, Director
Town of Wake Forest Parks, Recreation, and Cultural Resources

Design and Schedule Update

Zak Pierce, ASLA, PLA, LEED AP
Bill Hamilton, ASLA, PLA
CLH Design - Site/Civil/Landscape

Donna Ward Francis, AIA LEED BD+C
Jennifer Heintz Attride, AIA, LEED AP
Katelyn Ottaway, AIA LEED BD+C
Clark Nexsen, Inc. - Architecture and Building Engineering

Open Question and Answer Period

Open Forum for questions to Parks, Recreation, and Cultural Resources and design team members

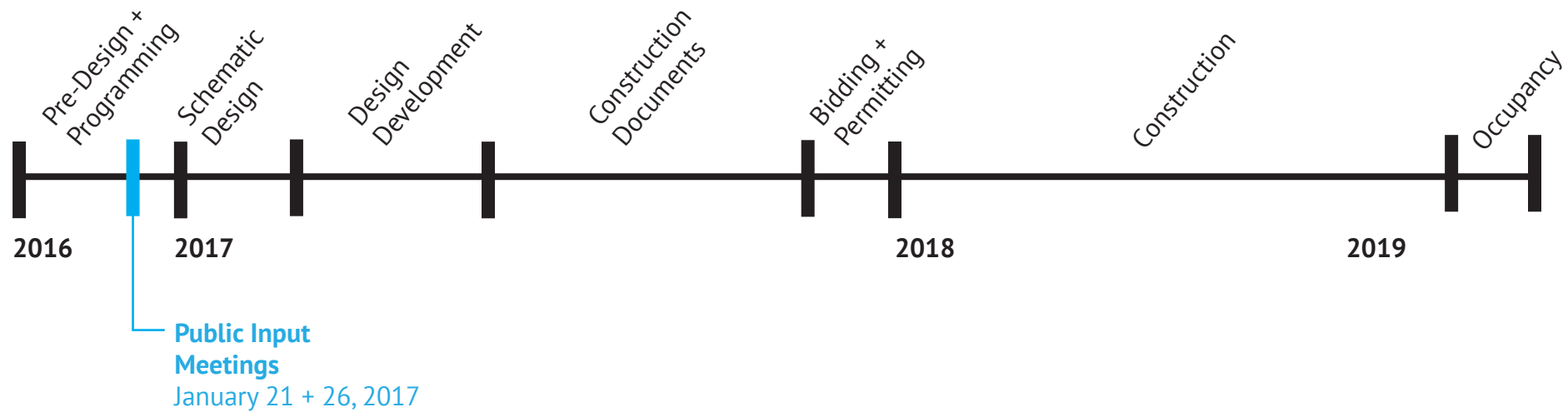
Adjourn/Breakout

Owner and design team members will break out into smaller groups and will be available for further questions and comments



AGENDA





DESIGN AND CONSTRUCTION SCHEDULE



1993



1999



2002



2004



2006



2008



2010



2011



2013



2014



2015



2016

SITE HISTORY



SITE CONTEXT

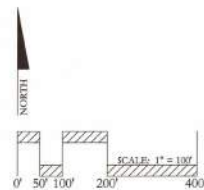


SITE CONTEXT



SITE CONTEXT

MASTERPLAN



PARK MASTER PLAN

Existing Park Elements

- A. Mule Barn
- B. Chicken Coop
- C. Tobacco Barn
- D. Log Cabin
- E. Walker Garden
- F. Performance Garden
- G. Amphitheater
- H. Event Stage
- I. Restrooms
- J. Pecan Orchard
- K. Richland Creek Valley Overlook
- L. Richland Creek Bottomland
- M. Upper Meadow
- N. Old Farm Pond and Wetlands
- O. Maintenance Facility
- P. Trail Bridges
- Q. Main Entrance
- R. Ribbon Wall—2,000 ft. Long
- S. Flower Garden
- T. Parking

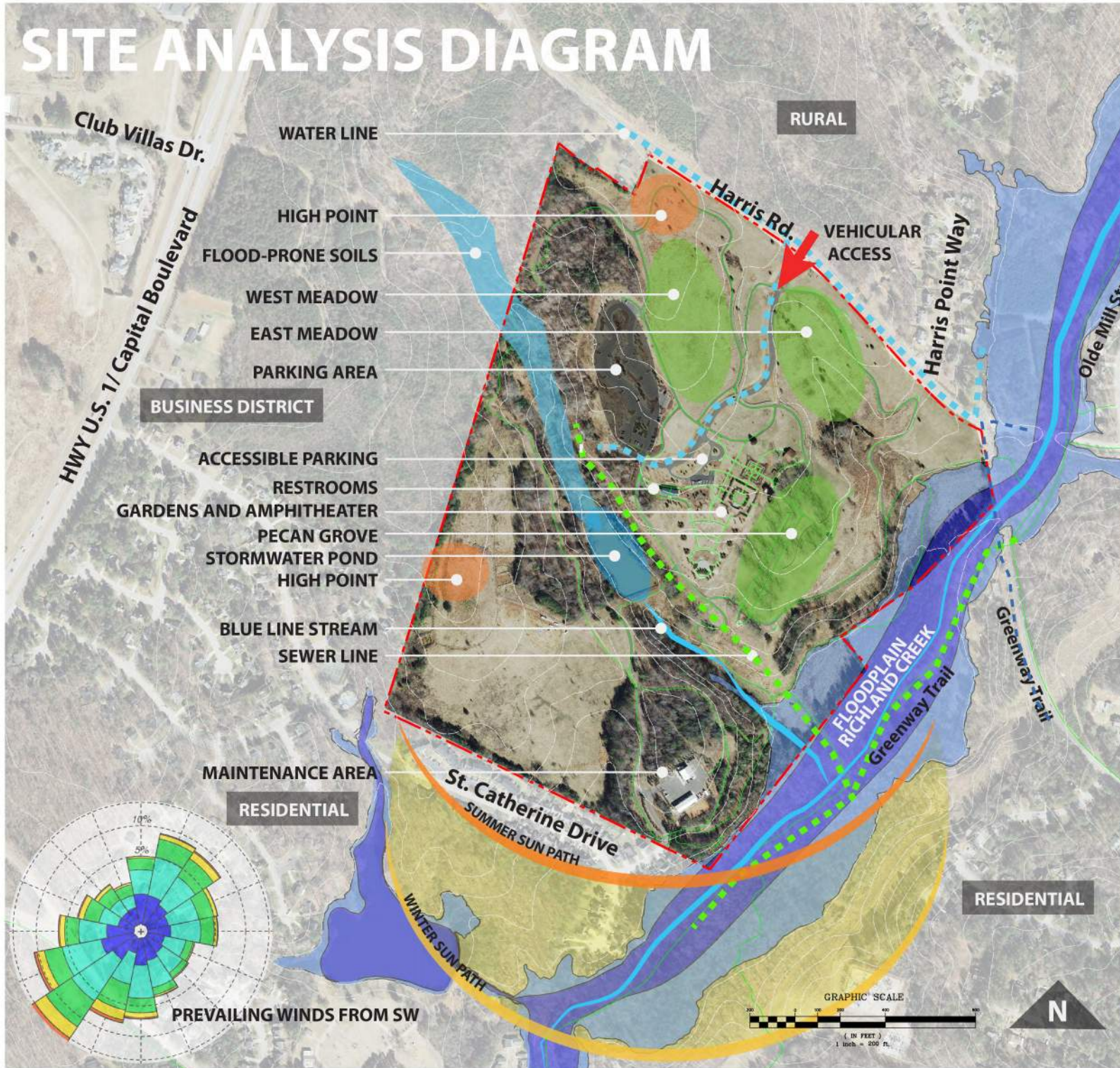
Future Park Elements

- 1. Community Center
- 2. Universally Accessible and Multi-Generational Playground
- 3. Baseball/Softball—200 ft. Field
- 4. Baseball/Softball—300 ft. Field
- 5. Soccer Fields
- 6. Restrooms and Concessions
- 7. Neighborhood Playground
- 8. Sand Volleyball
- 9. Fishing/Pond Overlook
- 10. Picnic Shelter (40' x 60')
- 11. Picnic Shelter (24' x 40')
- 12. Bridge Across Stream Valley
- 13. Connection to Richland Creek Greenway



Town of Wake Forest E. Carroll Joyner Park

SITE ANALYSIS DIAGRAM

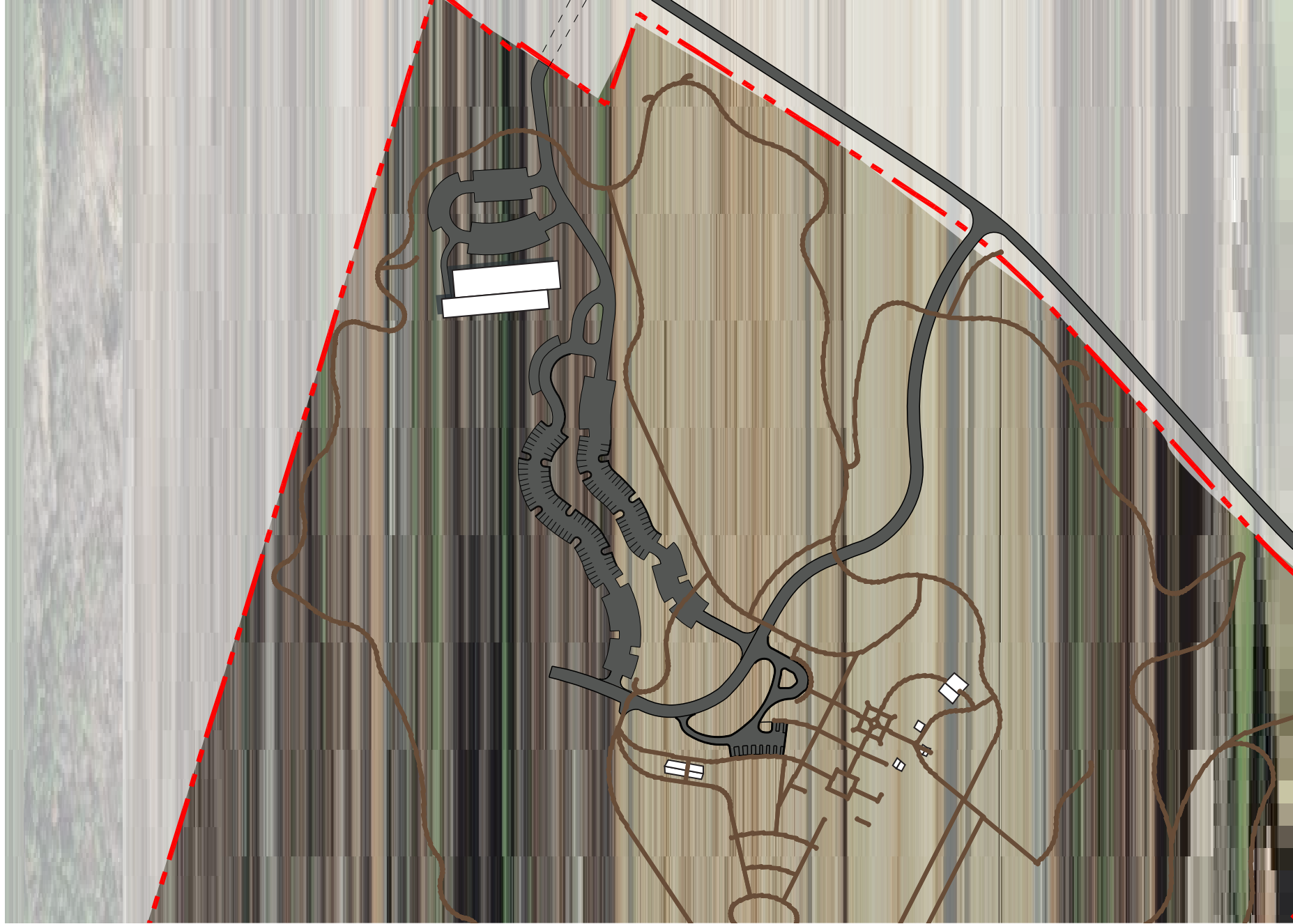


**E. CARROLL JOYNER PARK
COMMUNITY CENTER PROJECT**

PROJECT SITE



PROJECT SITE_PATH





PROJECT SITE_WATER

PROJECT SITE_SUN

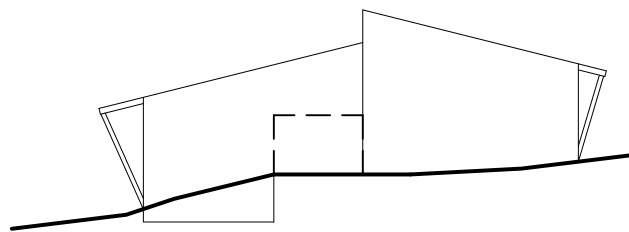
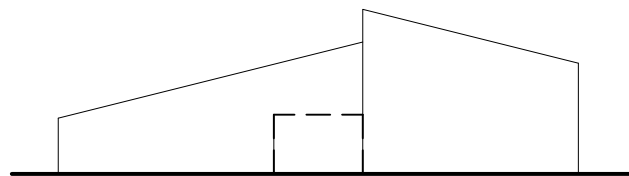
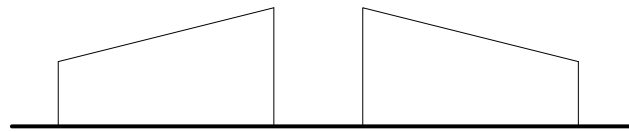
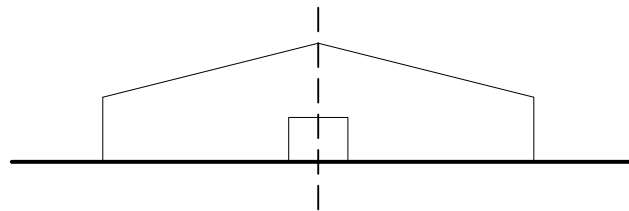
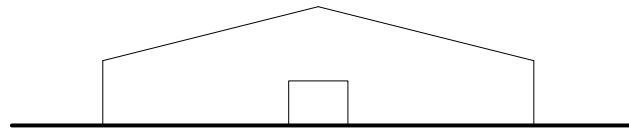
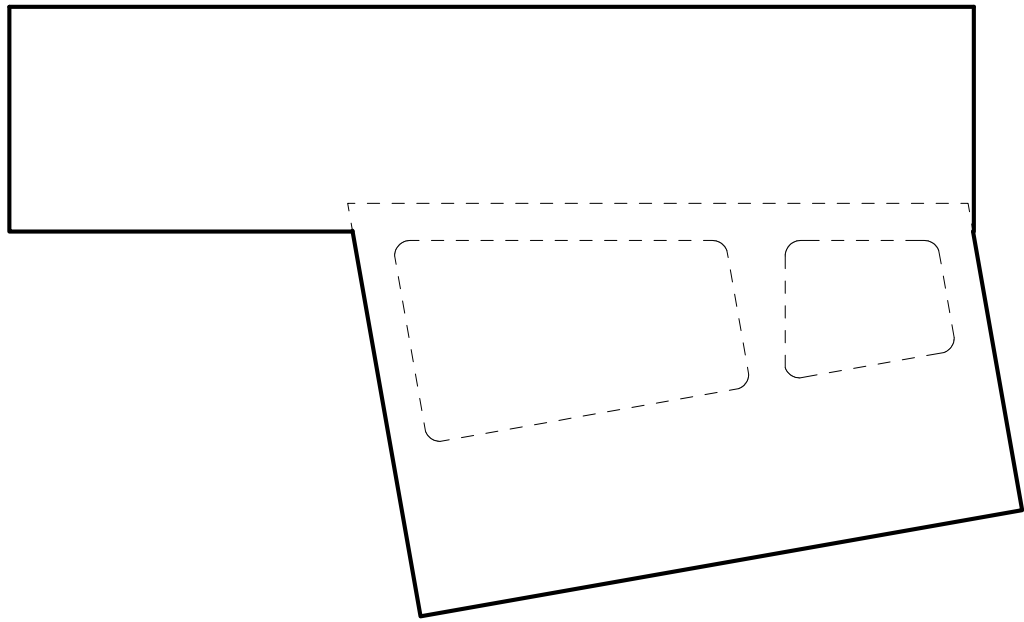


APPROXIMATE PARKING COUNTS:

EXISTING PARKING SPACES.....	170
RELOCATED PARKING SPACES.....	50
NEW PARKING SPACES.....	191
TOTAL PARKING SPACES.....	361



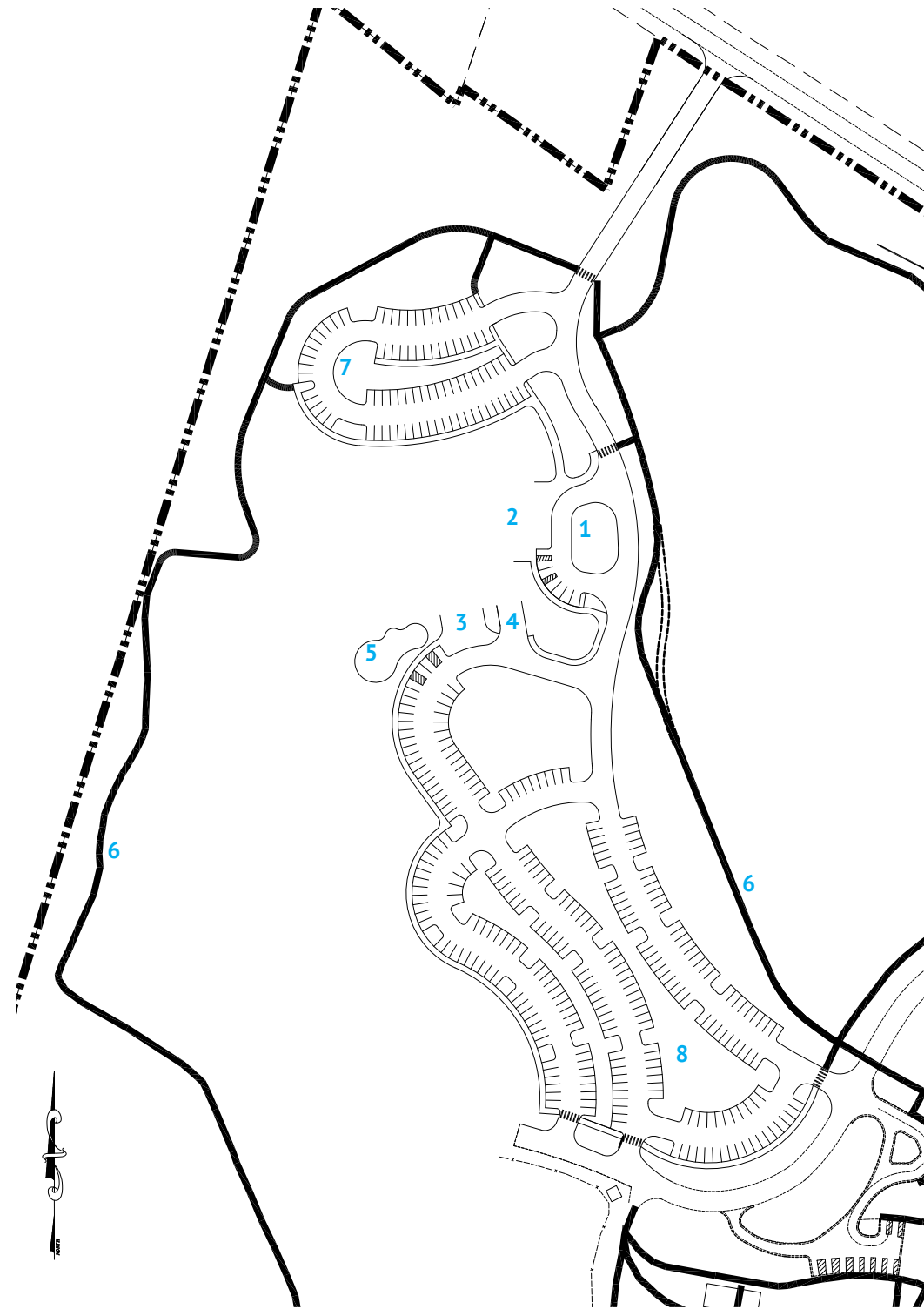
PROJECT SITE_PARKING



CONCEPT DIAGRAMS

- 1. Front Entry Plaza
- 2. Main Entry Plaza
- 3. Rear Entry Plaza
- 4. Service Yard
- 5. Splash Pad
- 6. Existing Trails
- 7. New Parking
- 8. Expanded Parking

SITE PLAN



- 1. Lobby
- 2. Circulation
- 3. Program Spaces
- 4. Building Support Spaces
- 5. Courtyard

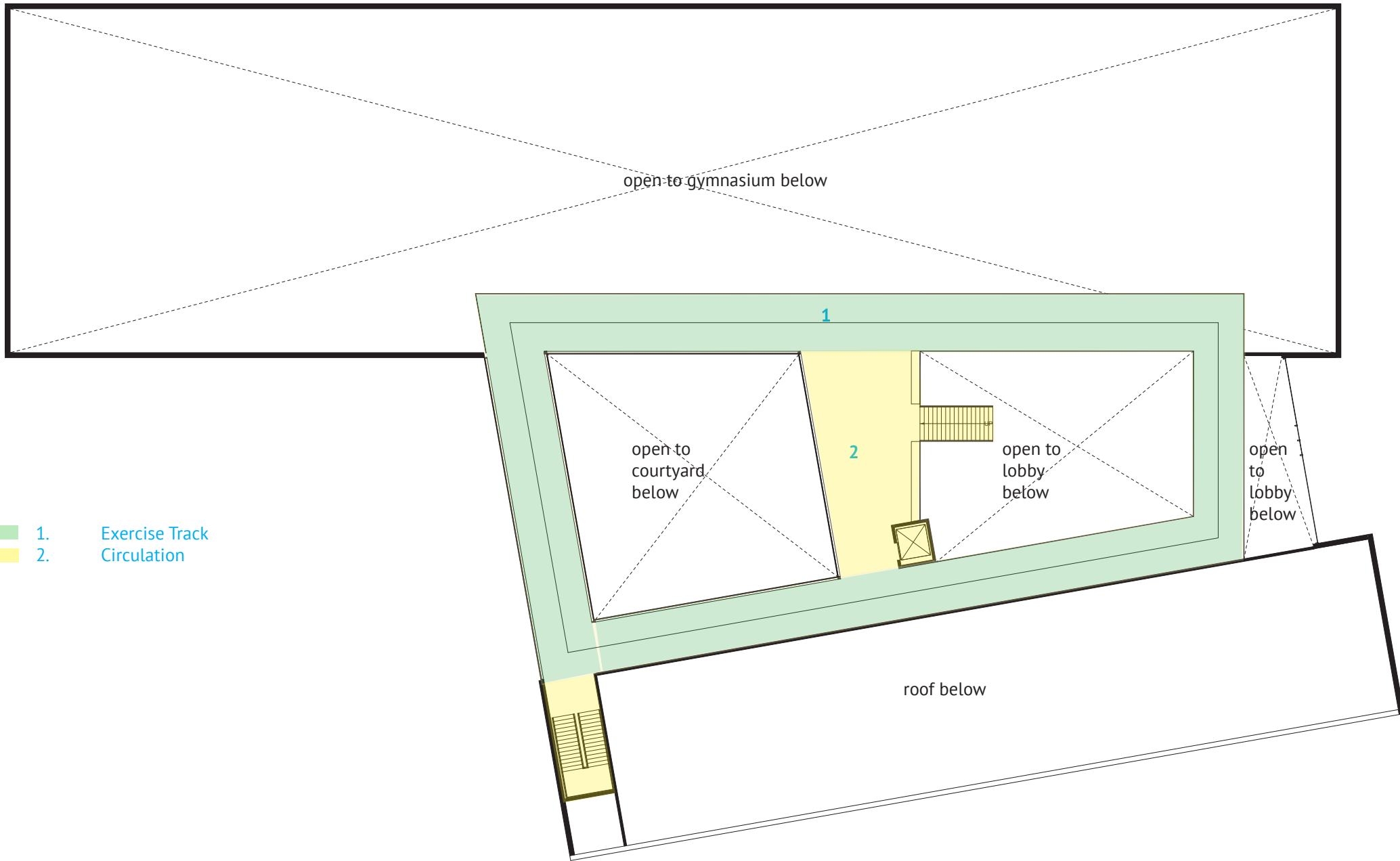


LOWER LEVEL PLAN



- 1. Lobby
- 2. Gymnasium
- 3. Information
- 4. Reception
- 5. Parks, Recreation, + Cultural Resources Offices
- 6. Circulation
- 7. Program Spaces
- 8. Building Support Spaces
- 9. Courtyard
- 10. Main Entry

ENTRY LEVEL PLAN



TRACK MEZZANINE PLAN

POTENTIAL MEASURES

Alternate Transportation Amenities

- Car charging stations, bike facilities

Recycling Facilities

Water Efficiency

- Rainwater harvesting for field irrigation, native plantings, limited or no irrigation
- Low-flow plumbing fixtures

Green Construction Materials

- Recycled content, regional, rapidly renewable, low emitting adhesives/paints

Construction Waste Management Plan

Energy Efficiency

- High-efficiency walls + roof, heating + cooling systems, solar-thermal hot water heating.
- Photo-voltaic solar energy harvesting, passive solar including shading devices, LED site lighting

Daylight and Views Outside

Improved Indoor Air Quality

- Control of indoor chemicals and pollutants

- Green cleaning and green education programs

SUSTAINABLE FEATURES

RENDERING

QUESTIONS

For more information:

Ruben Wall, Director
919.435.9560
rwall@wakeforestnc.gov

Town of Wake Forest Parks, Recreation , and Cultural Resources
301 South Brooks Street
Wake Forest, North Carolina 27587-2901

www.wakeforestnc.gov

THANK YOU FOR YOUR INPUT!